

"Jorge Suárez-Kilzi was born in Venezuela to immigrant parents of Spanish and Syrian descent. His collection of works is signed under his mother's last name, Kilzi, which is also often used to describe a person who works with plaster and chalk - unconsciously leading Jorge down a path he was destined for. The name has a link to a hard childhood in movement, to an immigrant background, to Latin American and its vernacular arts, to a sense of movement and evolution.

As a grown man, the sensibilities of his childhood took him all the way to Japan, where worked as an architect in the offices of Sejima+Nishizawa Associated Architects/ SANAA and Junya Ishigami. Swiss architecture, which seemed in contrast, firm and steady, called upon him on a different basis, a return to order but also a reconnection to nature. A recent trip to Mexico and the mesoamericas, felt to Jorge as forgiveness to his early history and aesthetics.

Driven by years of immersion in exotic culture and architectural experience, in 2018, he made the decision to become a freelance architect and artist, going from fields of architectural visualisations to ceramics and furniture, giving special attention to drawings and decorative motives. Every piece is expressed in simple forms and delicate emotions, where fluid silhouettes accompany each other like a soul in companionship.

Jorge's recent creation is titled "Mush" Lamps, comprised of two mushroom-shaped lamps made entirely of fibreglass and organic resins. This opaque material allows light to spread outwards, imbuing a warm glow and ambiance into any interior - existing as both a practical light source and ornamental piece. Jorge shares that his project began with no particular form in mind but later found a resemblance to mushrooms when complete - which he also shares a fascination for the fungi kingdom."



The “FOAM” Lamps

Made almost completely of glass, the foam lamps resemble the textures inside the seashells while adopting some of the bumps and twirls you can see in the sea foam formed at the beaches. These lamps accidentally look a lot like the little forest characters at the anime film Mononoke Hime, which I also like seeing them as. The light inside these lamps will be refracted and distorted. No internal structure is added and the bulb and cable is held in the narrow part through a spider-like structure.

Sizes: 22x12x35cm, 44x20x32cm, 25x15x88cm



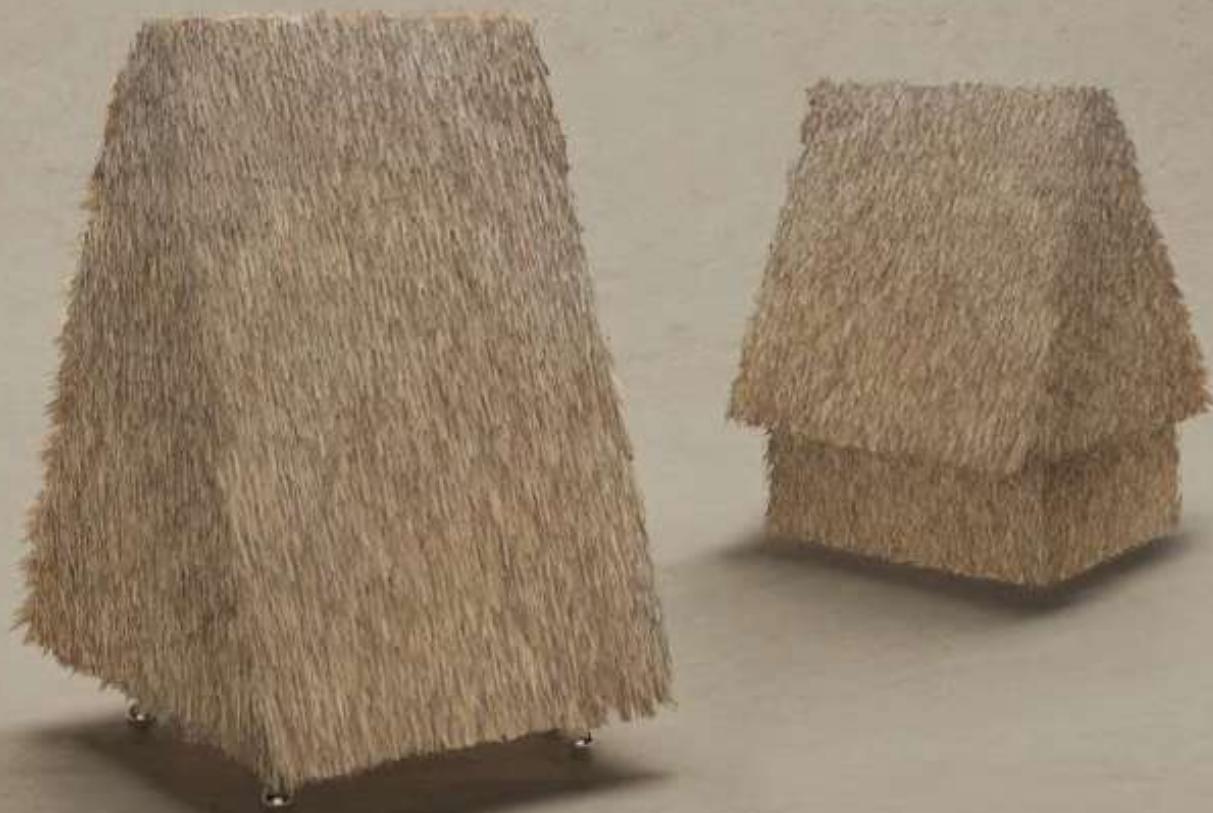
Kilzi

contact@kilzi.es

The “HIDA” Lamps

At the mountains surrounding the Hida river at the Gifu Prefecture, it is typical to have many thatched roof houses. In my recent visit to that area I took inspiration over these adorable houses and drew these two versions, one in a larger size in triangular shape without a base, and a smaller one with the base section in a rectangle and te top as a triangular prism.

Sizes: 50x60x110cm, 37x45x50cm



Kilzi

contact@kilzi.es

The “FLOWER” Lamps

Two little aluminium lamps with flower shaped opaque shades. The aluminium has qualities that reflect its surroundings in a very unique and beautiful way, and the round shapes create a distortion effect that intensifies this

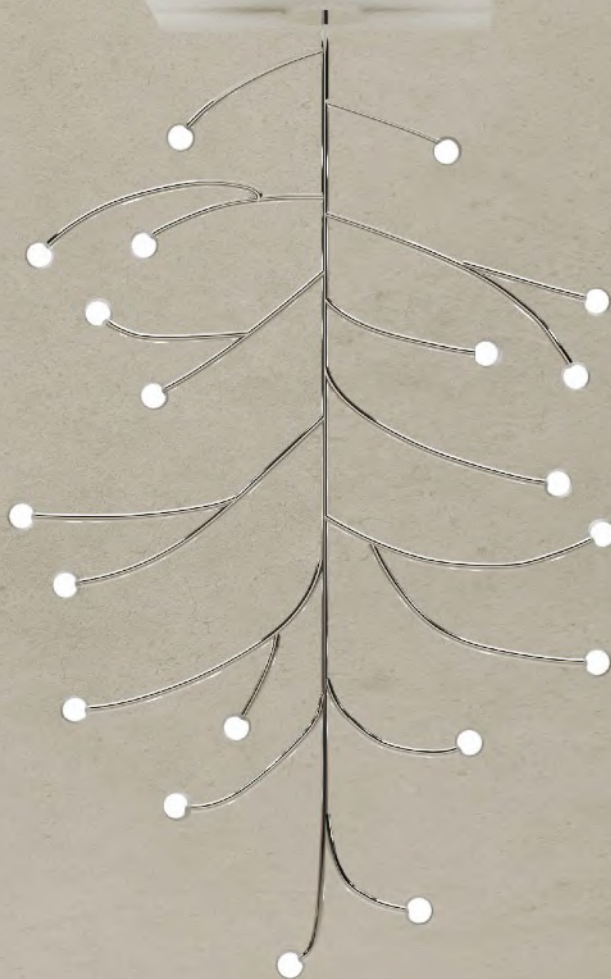
Sizes: 44x23x23cm and 34x34x34cm.



Kilzi

contact@kilzi.es

contact@kilzi.es



The “MILANO” Lamp

A lamp meant to be used for a special room for special occasions. This lamp is named like the city housing the Design Week, as I drew it on a piece of paper while on the phone with one of the exhibitors in the fair. It looks a lot like a coral branch and the bright tips in glass glow the way the deep sea fishes do when trying to attract prey.

Size: 145x95cm

Kilzi

The "RIDEAU" Lamps

Curtain. These lamps are meant to look like a piece of fabric draping over a table or a curtain hanging from a window. As so, the light that goes through it sees itself affected and deformed making it very subtle and welcoming. These pieces are made of solid moulded translucent resin and a circular halogen bulb. They can also be used as side tables or support for exhibitions.

Sizes: 57x50x32cm and 41x38x73cm



Kilzi

contact@kilzi.es

The “TWIRL” Lamps

These custom-shaped lamps are casted against a silicone cylinder that once held in position, can trap one shape with the direction, bend and length we want them to have. The thin stainless steel feet that hold them up could also be cut in position and finished up with a little sphere and a U shaped profile in which the resin piece is screwed into. Sizes are variable.



Kilzi

contact@kilzi.es

The “FISHING” Lamp

The fishing rod and the fish in this case don't depict a dead fish but the former supports and elevates the later. This piece is composed of a metal pipe that can turn to the sides and a base that can be snapped inside the edge of a table, a shelf or a side table. The light this little fish emits is not the light of a reading lamp, but more like an atmospheric light to set a smooth mood.

Size: 150cm tall.



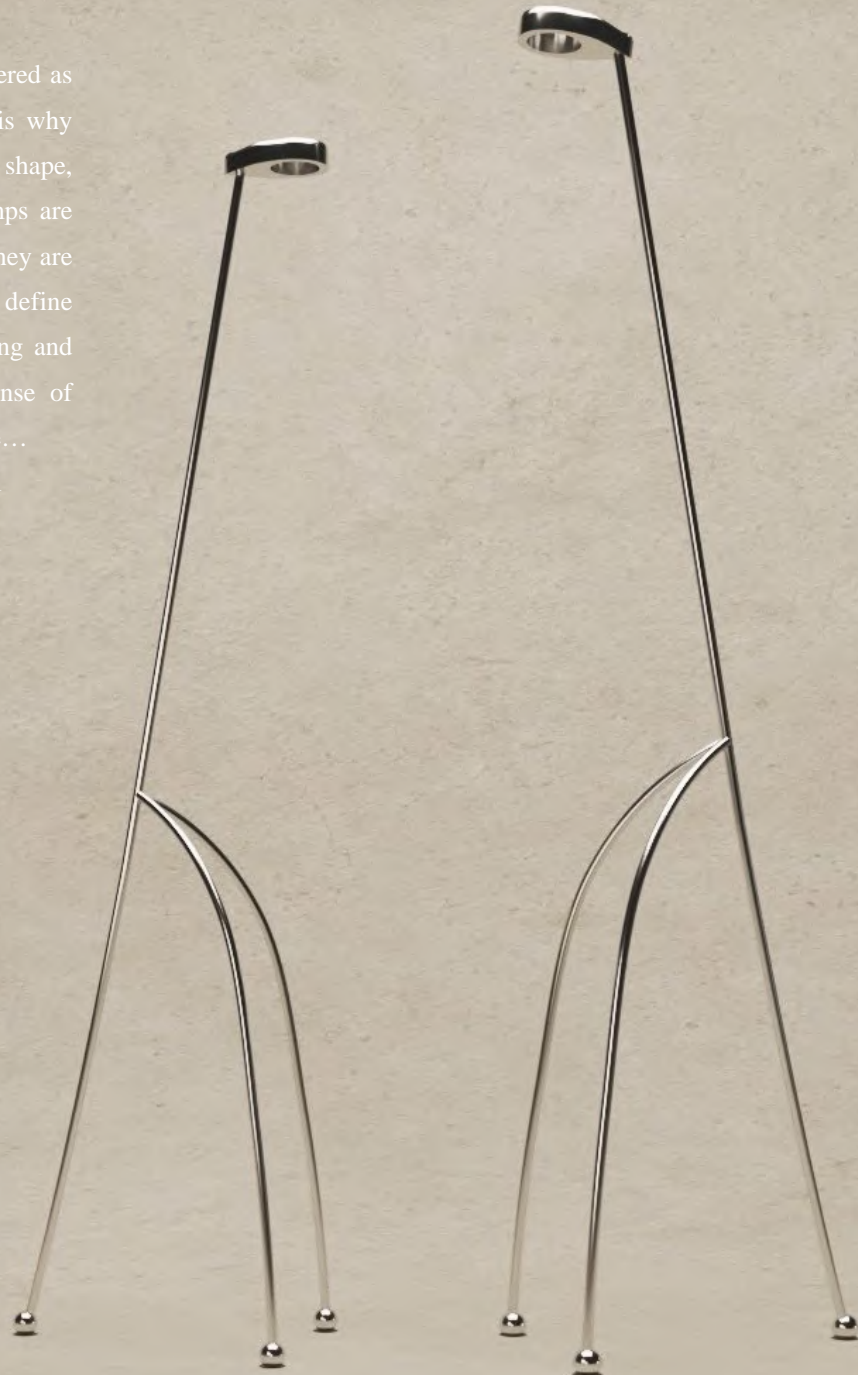
Kilzi

contact@kilzi.es

The “GIRAFFE” Lamps

In this project objects are often considered as or inspired in living organisms. This is why there is always space for variations in shape, sizes and positions. The “Giraffe” lamps are no exceptions and as a giraffe would, they are proposed in several sizes (yet to define production ones) and positions (standing and grassing). These variations give a sense of fluidity, of movement, lightness and life...

Sizes: 65x80x185cm and 75x90x215cm



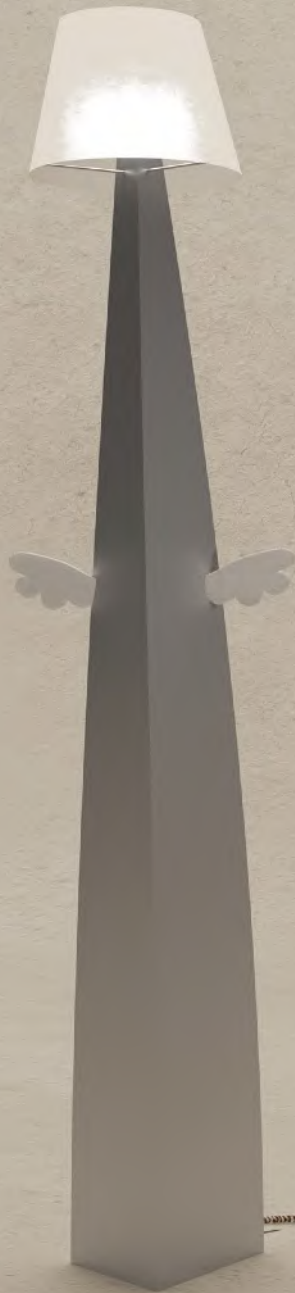
Kilzi

contact@kilzi.es

The “DODO” Lamps

Dodos were birds endemic to Mauritius that sadly went extinct from human activity. Nonetheless these flightless birds have continue to be well known and an icon for all things playful and quirky. These lamps are indeed this, a rather sophisticated shape and traditional shade that could result in a sleek lamp, but where the two switches that turn the lamp’s two bulbs on and off, are little wings, incapable of doing anything like they are meant for. This is an allegory of what design can be sometimes.

Size: 24x22x175cm 25cm diametre.



The “DODO” Lamps

Dodos were birds endemic to Mauritius that sadly went extinct from human activity. Nonetheless these flightless birds have continue to be well known and an icon for all things playful and quirky. These lamps are indeed this, a rather sophisticated shape and traditional shade that could result in a sleek lamp, but where the two switches that turn the lamp’s two bulbs on and off, are little wings, incapable of doing anything like they are meant for. This is an allegory of what design can be sometimes.

Size: 35x33x135cm 35cm diametre.



The “JUMBO-GRANNY” Lamp

Made in linen, these lamps recover the soft aesthetic of the lace in windows, tabletops, shelves and beds in most of our grannies houses. The more textile aspect of it, keeping the minimal and rougher approach of this project, is a reference to that romantic and feminine world, also resembling a skirt or a dress with its wavy section. The linen is then soaked in organic resins to keep its shape. The “Jumbo” versions is a standing size with a stronger presence in the space here in the raw material color.

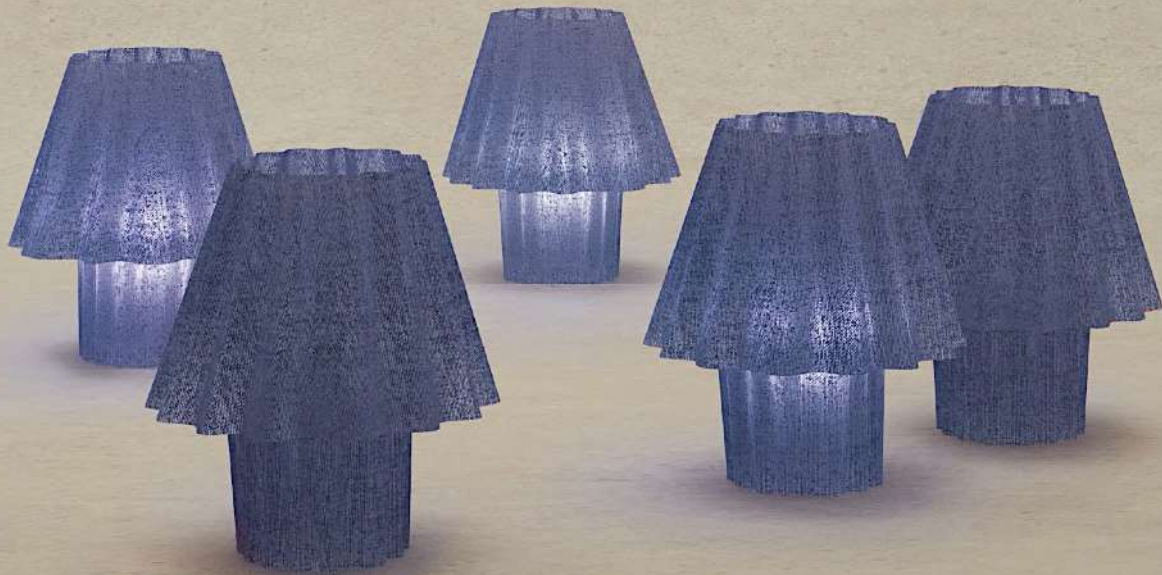
Size: 56x56x70cm



The "GRANNY" Lamps

Made in linen, these lamps recover the soft aesthetic of the lace in windows, tabletops, shelves and beds in most of our grannies houses. The more textile aspect of it, keeping the minimal and rougher approach of this project, is a reference to that romantic and feminine world, also resembling a skirt or a dress with its wavy section. The linen is then soaked in organic resins to keep its shape.

Size: 35X35X40cm



The “TWIG” Standing Lamp

This collection of items imagine how a very rudimentary stone age human would approach a lamp design. Most likely they will, as many vernacular craftsmen do, recover the natural shapes in branches and twigs to make a standing platform from which developing function. This here is an abstraction on that idea.

Size: 40x60x170cm



contact@kilzi.es

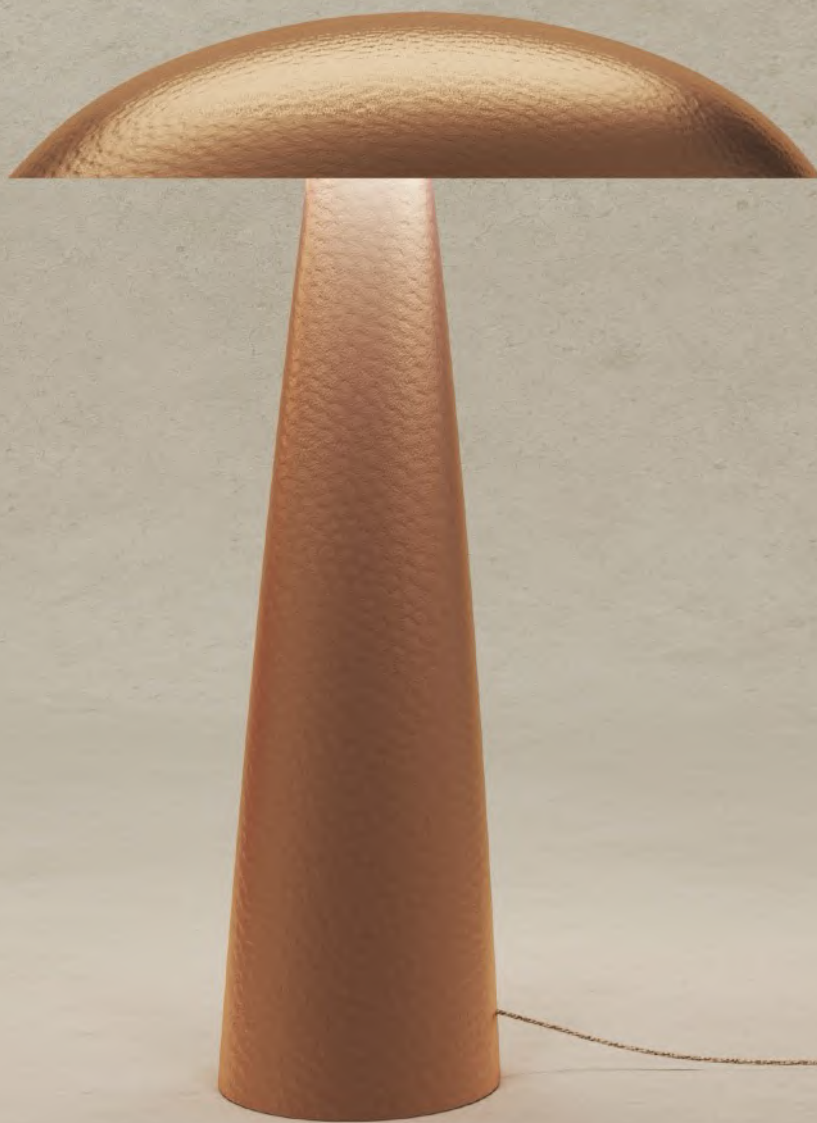


The “TWIG” Ceiling Lamp

This collection of items imagine how a very rudimentary stone age human would approach a lamp design. Most likely they will, as many vernacular craftsmen do, recover the natural shapes in branches and twigs to make a standing platform from which developing function. This here is an abstraction on that idea.

Size: 80x80x90cm

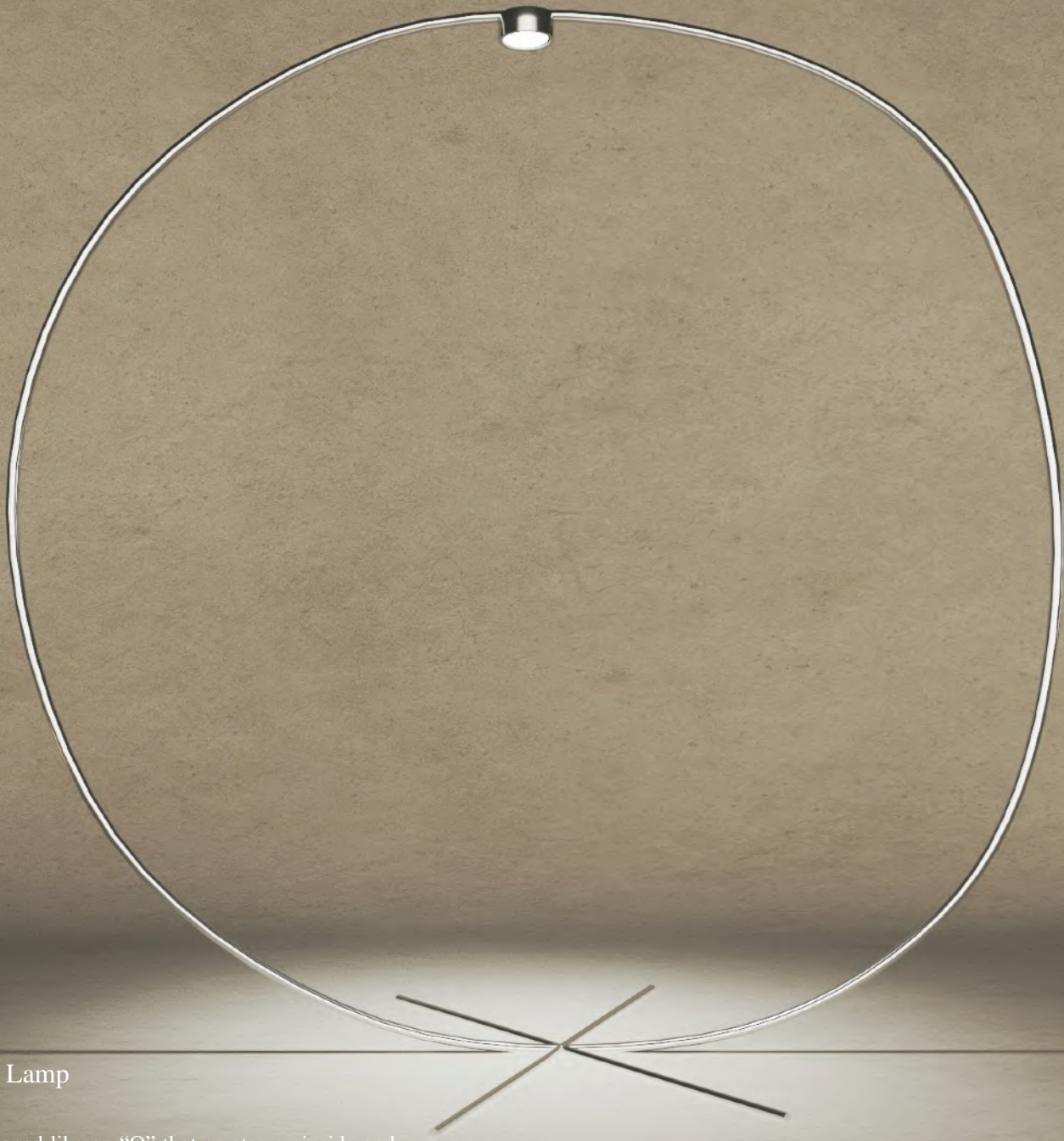
Kilzi



The “PORTOBELLO” Lamp

The darker Italian counterpart to the champignon, the portobello have usually had a fancier connotation, yet being pretty much the same. Copper in this case, as oppose to stainless steel is meant to recover that effect, keeping the mushroom appearance, but making all about the texture and colour of the material.

Size: 90x90x130cm



The “O” Lamp

A lamp shaped like an “O” that creates an inside and an outside from the light it generates and the sense of insiderness it provides. Size: aprx. 200cm Ø

contact@kilzi.es

Kilzi

The “GEGANT & CAPGROS” Mush Lamps

Bigger versions of the fibreglass lamps, “Mush”, these two are named after two popular characters in Catalan Folklore: the Gegant (giant) and the Capgrós (literally, big head). These two come to fill the void for larger pieces in this material all while using an entirely different language to the original “tall” and “chub” mush.

Sizes: 130 and 80cm tall and diametres 25 and 40cm.



The “CASHEW ” Lamp

Cashew nuts are undoubtedly one of the punkiest nuts. They are not even meant to be all that healthy. This is quite irrelevant for this piece, because the name really came after the design, but this lamp is also quite a punk and a statement. The casted and hammered aluminium base holds an upper translucent piece, intended to be made of vellum or glass.

Sizes: 35x18x55cm / 25x15x40cm



The “BOBO” Chairs

Made in solid wood, these chairs are referential to ancient chairs from the mediterranean sea. Their simplicity and heavy build give them also a friendly and uncomplicated look all while keeping its sophistication and quality feel. There are four types, square back, square back tall, round back and round back tall. These four combined could allow for different kind of layouts adding to their flexibility.

Sizes: seats at 42cm. 33x33x78/92



The “BOBO” Chairs

Made in solid wood, these chairs are referential to ancient chairs from the mediterranean sea. Their simplicity and heavy build give them also a friendly and uncomplicated look all while keeping its sophistication and quality feel. There are four types, square back, square back tall, round back and round back tall. These four combined could allow for different kind of layouts adding to their flexibility.

Sizes: seats at 42cm. 33x33x80/98



The “FRINGE” Console and Mirror

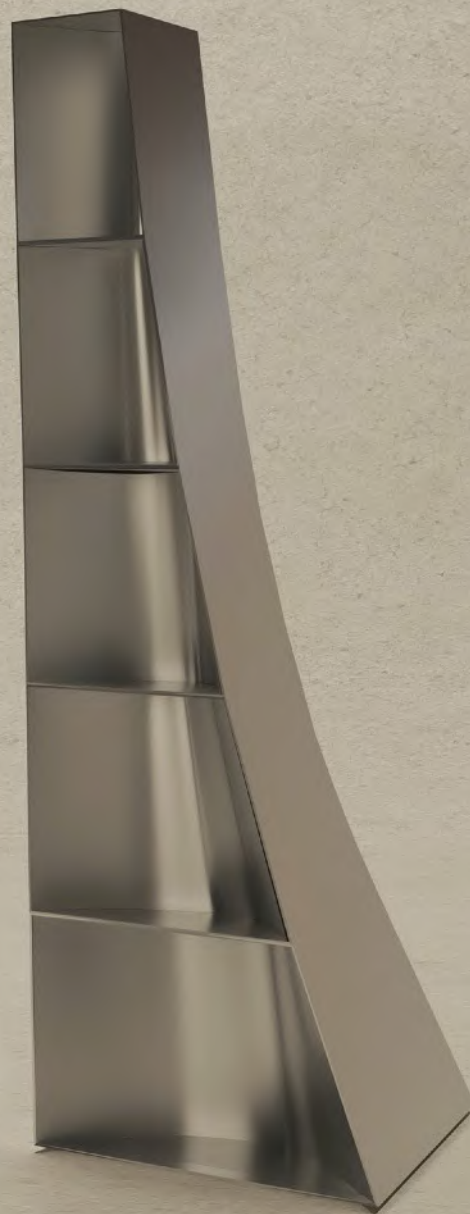
The set of console in polished stainless steel and mirror follows both the same shape. This duality is a reference to the “ground” and the “sky” and the edge between one and the other. Sizes: 200x50x80cm / 200x50x7cm



The “BRIDGE” Shelf

The bridges are often structures with a lot of movement and rhythm. The composition formed of arches following the charges, the horizontal and vertical reinforcement slats, and cables, are all recomposed here in a smooth envelop in stainless steel. The shelves are not the whole of the empty space inside each level, but at its back side, a soft curved sheet of metal, making it possible to use very thin panels.

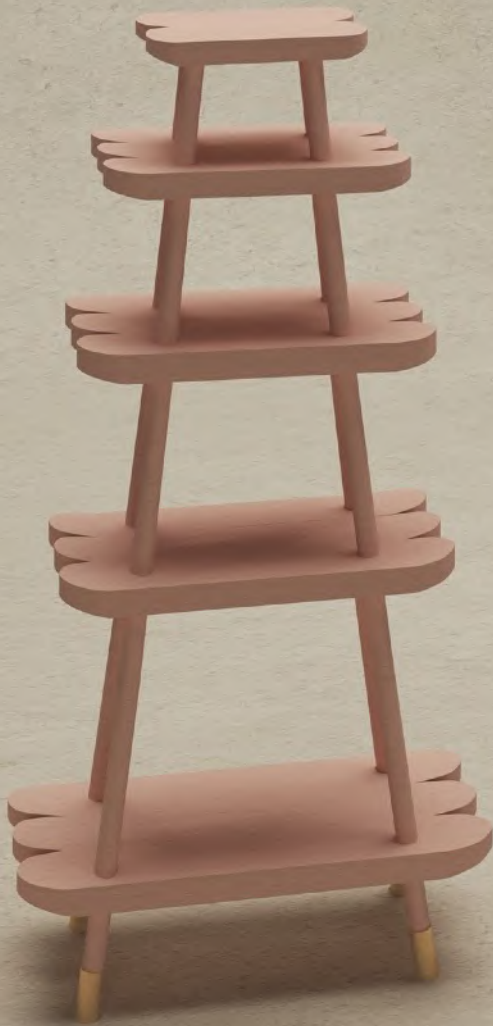
Size: 60x40x175cm



The “CHERUB” Shelf

The whole of the “Cherub” line is conceptualised around the idea of of cuteness and lightness. As the small angels painted in Renaissance and Baroque murals, the color palette of these pieces is soft and blushy. The ends of each slab are decorated with wing-like motives and the feet finished in golden brass. These can be made in more sober woods or in this coloured coated wood.

Sizes: Shelf 55x35x135cm Table: 55x55x25cm



The “CHERUB” Tamble

Following the same aesthetics of the other “cherub” pieces, this one being the largest of them, is shaped like a cloud. The same color scheme and materials are present here but in a heavier build.

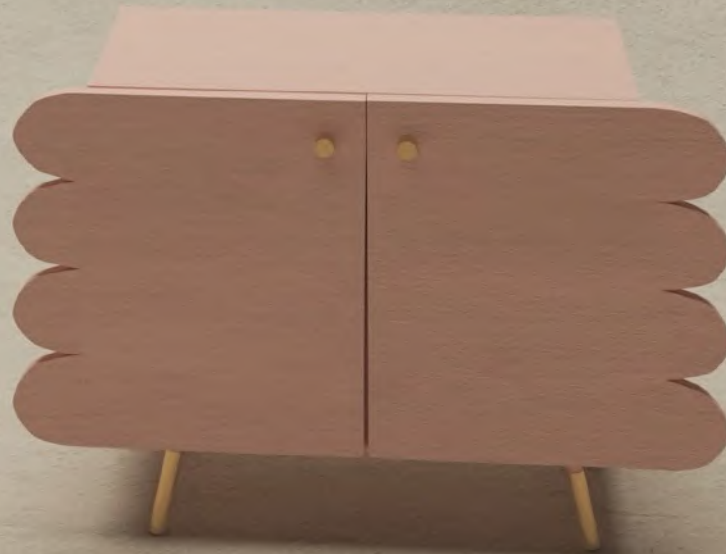
Size: 120x240x74cm



The “CHERUB” Console

The whole of the “Cherub” line is conceptualised around the idea of of cuteness and lightness. As the small angels painted in Renaissance and Baroque murals, the color palette of these pieces is soft and blushy. The ends of each door are decorated with wing-like motives and the feet finished in golden brass. These can be made in more sober woods or in this coloured coated wood.

Size: 180x55x80cm



The “WAVE” Chair

Looking like an open hand waving friendly, the “wave” chair looks like it could take a jump and become an animated object. This is weird to think about, but it is a recurrent idea in my design process. Thinking of these pieces as soul-bearing entities, with their own character, movement and intentions, do help me decide which way they will develop and be shaped.

Size: 82x67x98cm



The “STAR” Chairs

The back of these chairs is out of place. The Star is patting the back of the person sitting here, with its right arm. These are not meant to be long-use chairs, but more like a complement for a temporary sit like the vanity piece or a terrace.

Size: seat 42cm 38x38x88cm





The “STAR” Vanity

The bottom leg of this five-legged star turns into the table of the vanity, where you will find a small drawer where to keep all of your beauty tools. The edges of the star could also be used to land small items making it into an inhabited “accident” like when debris get sunk in the ocean and corals grow in.

Size: 120x120x72xcm star: 172x160cm

contact@kilzi.es

Kilzi

The “KNOB” Sofa

This sofa is made of potato-like individual puffs that are connected intrinsically by metal pieces. The tightly packed puffs are consistent enough not to flatten down out of the bodyweight of the person sitting while remaining soft and adaptable. This sofa is an attempt to create something extremely simple and systematic while allowing a playful and practical use: Size: individual puff 70x40ø cm.



The “HEIAN” Cupboard

This lamps are bound to be the staple of this young design project. Their friendliness and lightness are contagious and and I do wish you see them as a pet or a friend. They are always changing with the daylight and their light is subtle and diffused, very soothing and calming. We have developed two finishes, one resembling “bone” and another with organic fibres resembling Japanese “paper”.



The "TWIG" Hanger

This collection of items imagine how a very rudimentary stone age human would approach a lamp design. Most likely they will, as many vernacular craftsmen do, recover the natural shapes in branches and twigs to make a standing platform from which developing function. This here is an abstraction on that idea.

Size: 60x50x176cm



The “SLAB” Sofa

A set of sitting pieces that emulate a set of slabs superposed like at ancient dolmens. The almost accidental look of these pieces do actively seek for comfort and variety of uses. The fabric used has metallic fibres to create a more stone-like texture.

Size: 280x88x78cm



The “SLAB” Sofa

A set of sitting pieces that emulate a set of slabs superposed like at ancient dolmens. The almost accidental look of these pieces do actively seek for comfort and variety of uses. The fabric used has metallic fibres to create a more stone-like texture.

Size: 260x88x58cm



The “SLAB” Chair and Puff

A set of sitting pieces that emulate a set of slabs superposed like at ancient dolmens. The almost accidental look of these pieces do actively seek for comfort and variety of uses. The fabric used has metallic fibres to create a more stone-like texture.

Sizes: 88x88x110cm / 180x88x41cm.



The "TOO SHY" Chair and Stool

I feel sometimes shy to be around new people. These chairs collect these emotions and shape them into wobbly legs and back and arm supports that try to scape to the sides.

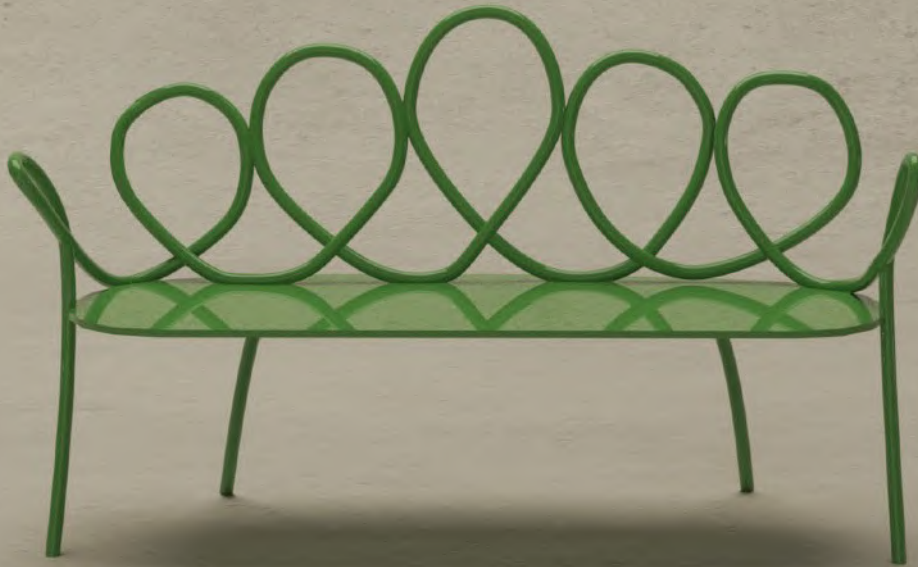
Sizes: 108cm and 78cm tall



The “NARBONNE” Bench

In the most romantic French style garden, but with the freshness of the south, this imperfect sitting pushes you to be your true self and accept time is sometimes there to be “wasted” gracefully. The loop of steel pipe create a beautiful pattern and compose the back and the legs of this bench. Painted in green for sand surfaces and in white for lawn.

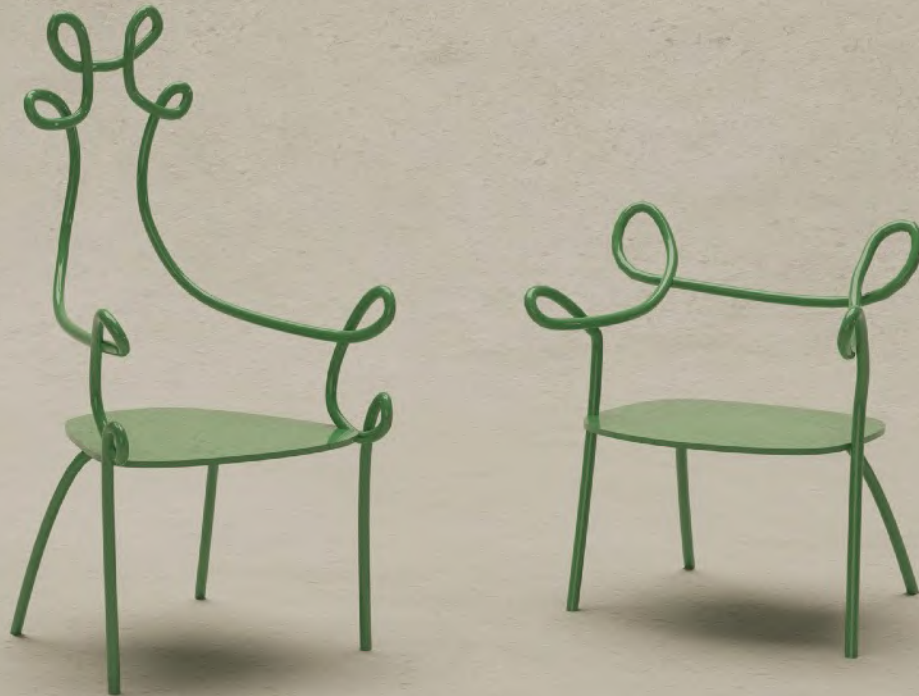
Size: 200x90x50cm.



The “NARBONNE” Garden Chairs

In the most romantic French style garden, but with the freshness of the south, this imperfect sitting pushes you to be your true self and accept time is sometimes there to be “wasted” gracefully. The loop of steel pipe create a beautiful pattern and compose the back and the legs of these chairs. Painted in green for sand surfaces and in white for lawn.

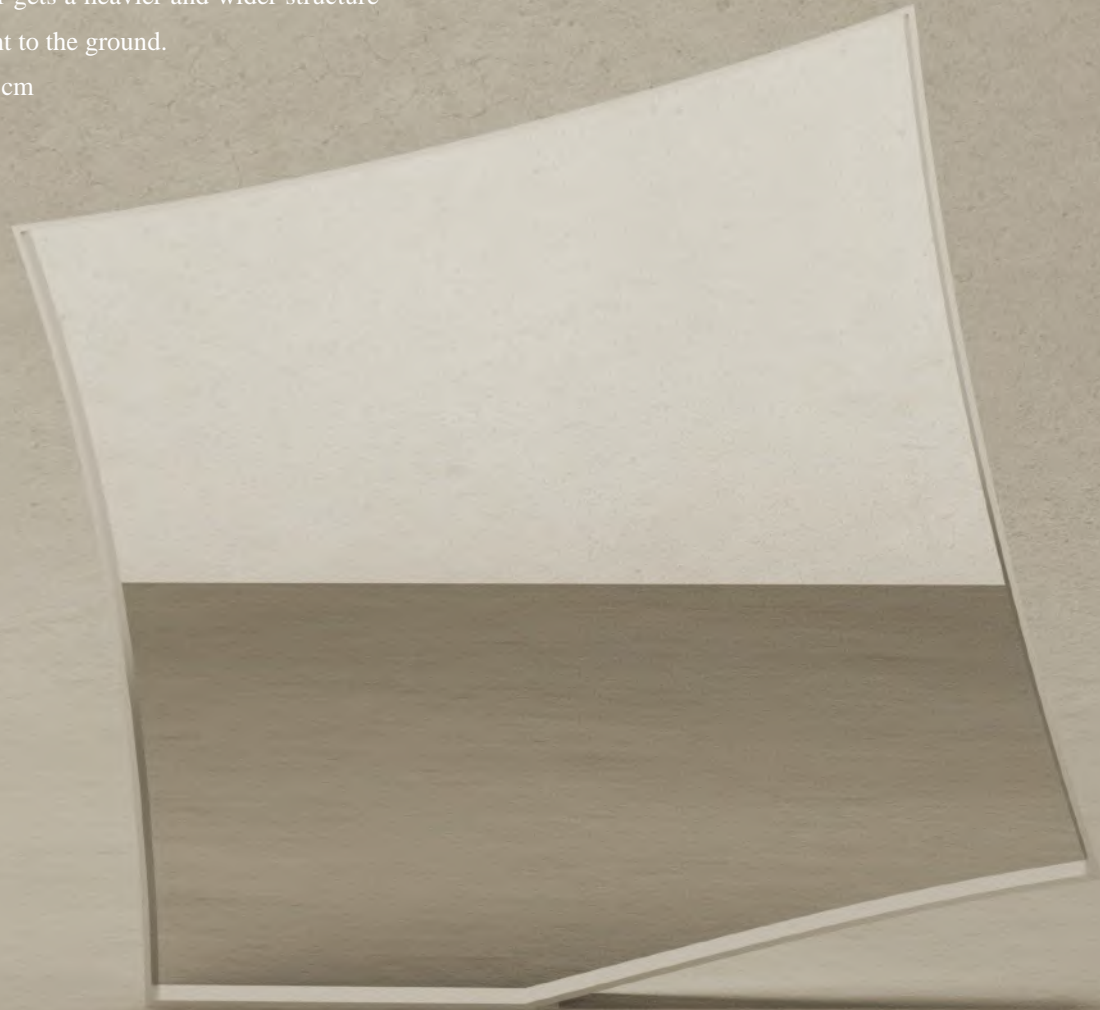
Sizes: 85x65x125cm. 85x65x80cm.



The "PILLOW" Mirror

Inspired by the installation at Tokyo Contemporary Art Museum by Architect and colleague Junya Ishigami, this mirror copies the reflective balloon making it appear like it will take off at any time. In section this mirror gets a heavier and wider structure at the contact point to the ground.

Size: 200x185x65cm



The “TOTEM” Bench

These solid wood benches, are both prepared for exterior and interiors. They are built in heavy pieces all while having small quirks that make it playful and light like the round shapes for the back and sit, the crooked legs, and the non parallel lines.

Sizes: 75x80x43cm / 320x45x85cm



The “THUMB ” Mirrors

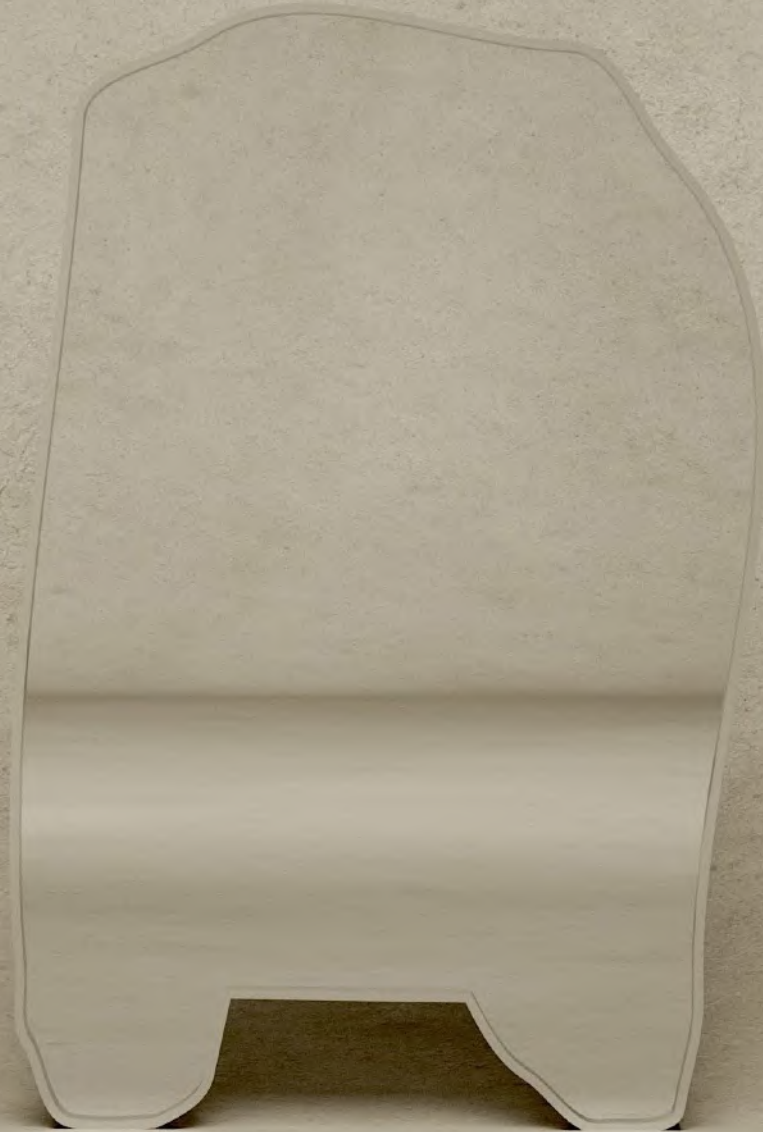
Two mirrors, in a very “Kilzi” attitude, lean to the side and communicate with each-other. A strong base to the ground, as a tree or a mushroom would starts getting smaller and then round. Natural inspiration, softness and imperfect shapes that create balance are all depicted in these rather minimal pieces. As usual they are meant to share space but could be used separately, the smaller one even as a table-top piece. Sizes: 55x100x4cm 55x135x4cm



The “GORDITO” Mirror

One of my personal favourite, “gordito” is a cute name you would call you toddler, your partner, or even to your cat. This piece has some of those qualities of cuteness and sort of defenceless that makes you want to protect and nourish. This mirror is a one piece glass that stand on its own two feet with some apparent laziness or difficulty. Sides are wobbly, and almost never precise.

Size: 85x155x9cm



The “LAUSANNE” Chair

There is something ancient and celebratory about most populations around Lac Léman. The flags for each population, the cute cottages, the flowers. These chairs are a modern and simplified concept of what I imagine old times in this area could look like. Solid yet light, elegant yet always quirky and naïve, strong yet with a sense of safety.

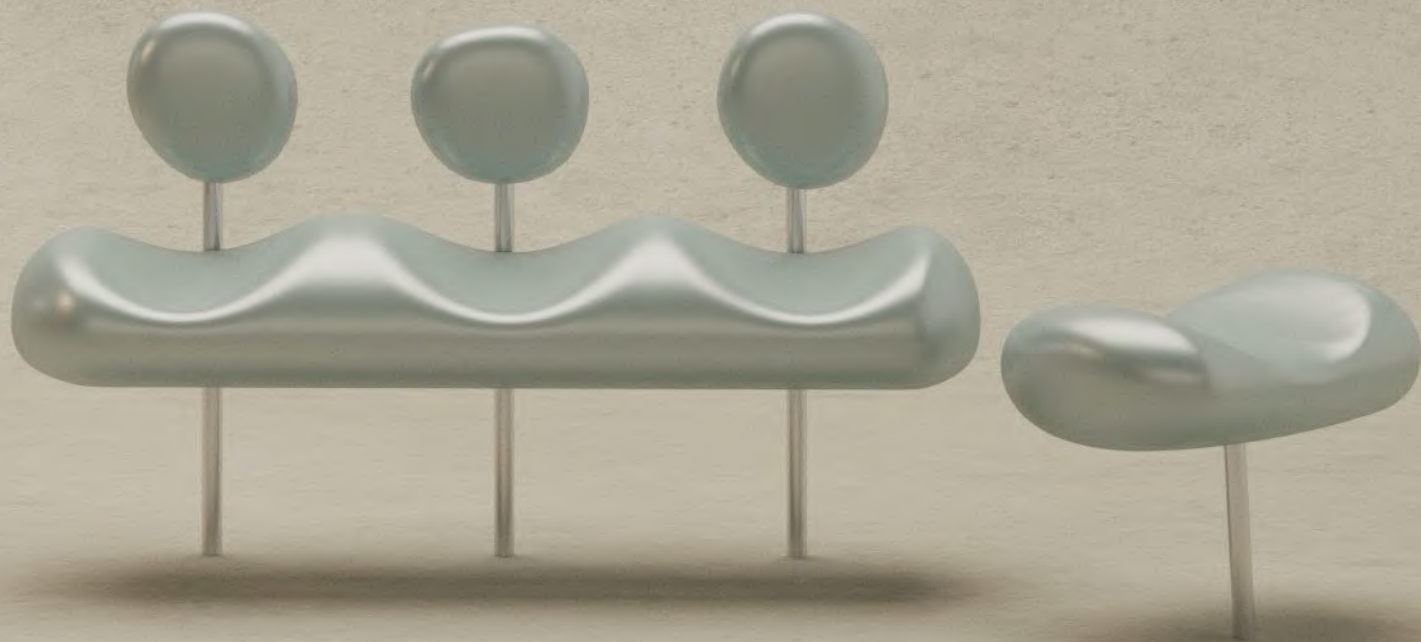
Size:42x50x86cm



The “PEANUT” Benches

Outdoor sitting for public spaces, the “peanut” benches are a softer answer for common space, adding ergonomic forms all while solving the issue of non-civic use of sitting surfaces. This strong yet light construction is made of anodised aluminium with structural stainless steel parts.

Sizes: request info



The “HIZO ” Console

Hizo, is a way of saying prize, goal or treasure in Japanese. This very unique piece can be customised to fit your special prize in life. A volcanic stone or concrete base supports a small drawer console in cedar wood and gold leaf, to keep treasured items.

Size: request info.



The “TUMBLE” Chairs

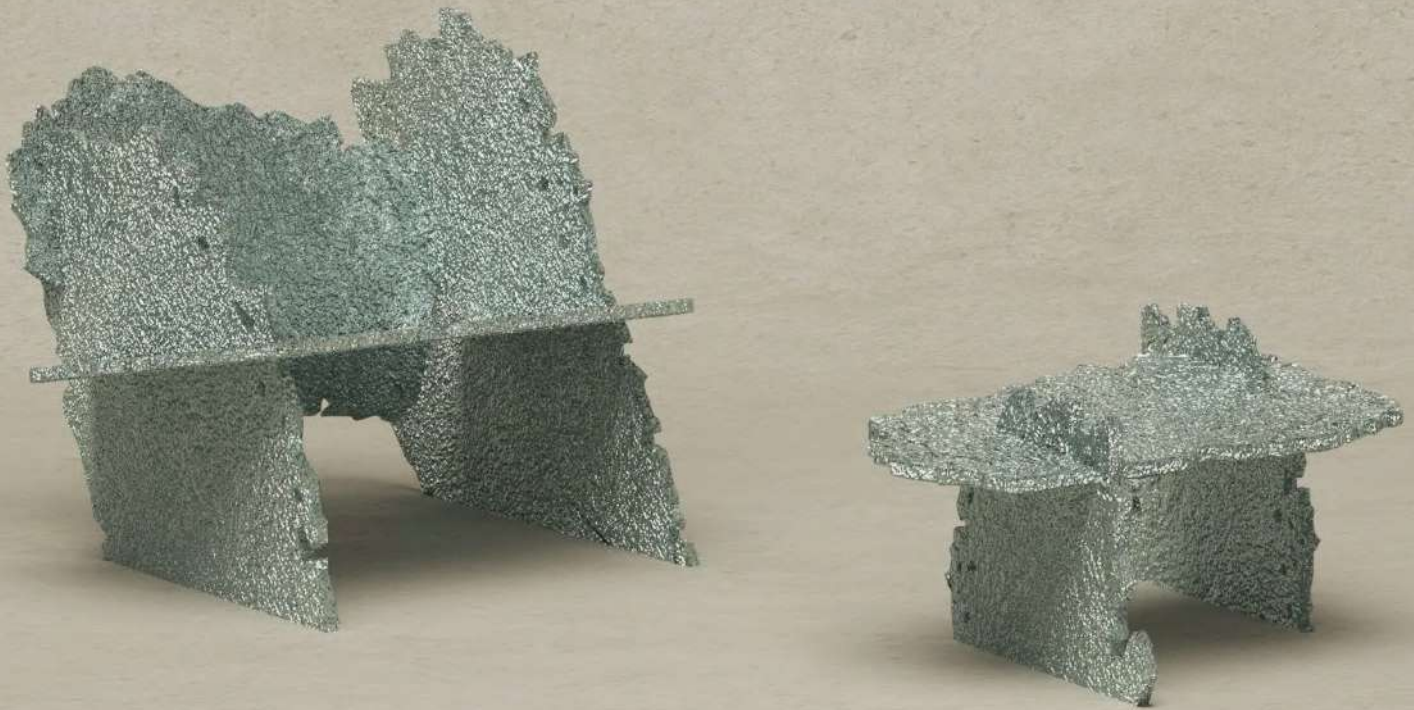
Thin. Flimsy. Wobbly. These are adjective I often like in things around me and my creative world. These chairs are light tubular stainless steel sections imitating the stretching back of an athlete, before the start spinning into a tumble. These chairs are one of my favourite designs and they are filled with charisma! There are two variations available, the wider and lower armchair and the armless chair with a taller support for the back. Sizes: 55x45x65cm



The “ZUMAIA” Chair and side table

In the Basque Country seaside, you can find famous rock formations that are composed of overlapping slabs of volcanic stone. These are extremely powerful and resonated in my head for many years. Melted aluminium in hand-carved rock create these labs that will later pile up and against each-other to create brutalist and elegant compositions.

Sizes: 90x80x80cm and 90x40x45cm



The “ZUMAIA” Shelf

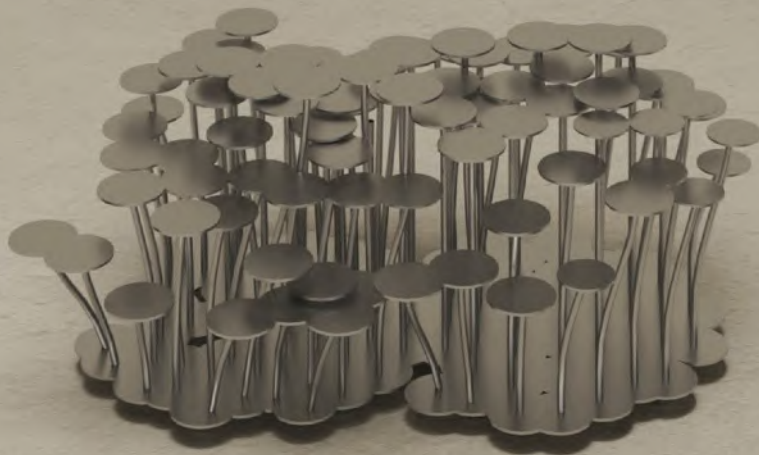
In the Basque Country seaside, you can find famous rock formations that are composed of overlapping slabs of volcanic stone. These are extremely powerful and resonated in my head for many years. Melted aluminium in hand-carved rock create these labs that will later pile up and against each other to create brutalist and elegant compositions.

Size: 95x60x150cm



The “ENOKI” Side Tables

Enoki mushrooms are used often in Japanese cuisine in soups and stews and are quite unique looking. Their multiple stems at different heights are copied by this homonymous side-tables, which are more of a system or a concept than a closed design. Their 10cm diameter platforms can easily support a cup or a glass. Several at the same height could support a small lamp, inclined ones can hold a book in reading position, the space between stems can also hold magazines and other books. For a store's windows diameter and length could vary, and turn into hangers or hold hats and jewels for instance. Sizes: request info.



The “ENOKI” Shelf

One other variation of this enoki inspired system, is when a bunch of them take the same height and create a platform, and then a shelf. The inclination of the stems could also create space to store books that are deeper than the slabs.

Sizes: request info



The “WÉI” Cupboard

This cupboard is made using simple drawers like those in the Chinese herbalist pharmacies with the rarity of being inscribed in a roundish shape. The roundness of this piece creates an interesting equilibrium between the typical heaviness of these kind of pieces and Lightness. Size: 180x175x45cm



The “WÉI” Lamps/Parevent

In the same line of Chinese inspired pieces, these round pieces recover a typical style of pare-vent in that country. The round shapes are often used in traditional Chinese architecture to create entrances and windows, and even the base for many buildings. These space separations in thin wood allow them to let light through as well as providing privacy.

Sizes: 70x85x35cm / 150x165x50cm



The "TOWER" and the "POND"

These two lamps are complex hand-carved volcanic stones constructions, that could be used for both interiors and exteriors. These two give a diffused light and represent the duality that I often explore of taller and flatter objects, like a tower by a pond.

Sizes: 42x135cm / 90x42cm



The “BRANCH” Flower Vase

Introducing the limited edition "Diamond Chair" by Harry Bertoia, a highly sought-after collectible design item. Created in 1952, the chair's unique diamond-shaped form is made from welded steel rods and finished with a delicate lattice work. Its sculptural appearance and innovative design have made it a highly coveted piece among collectors of mid-century modern furniture.



The "ENOKI" Side Tables

Introducing the limited edition "Diamond Chair" by Harry Bertoia, a highly sought-after collectible design item. Created in 1952, the chair's unique diamond-shaped form is made from welded steel rods and finished with a delicate lattice work. Its sculptural appearance and innovative design have made it a highly coveted piece among collectors of mid-century modern furniture.











